

OPENING REINFORCEMENT AS PER CODE OR AS SPECIFIED

$\frac{1}{2}$ " (13mm)
GYPSUM BOARD

$1\frac{1}{2}$ " (38mm)
MIN COVER

STRONGHOLD 8" (203mm)
STRAIGHT FORM UNIT

VAPOR BARRIER LAPPED
& SEALED TO FRAME

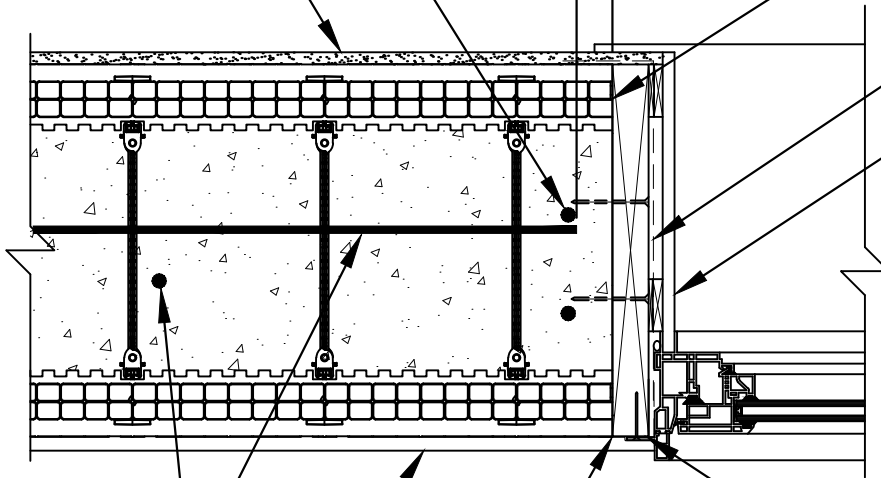
JAMB EXTENSION PR
GYPSUM BOARD RETURN

HORIZ/VERT
REINFORCEMENT
AS PER CODE OR
AS SPECIFIED

EXTERIOR FINISH
AS SPECIFIED

JAMB TRIM FLASHING TAPE
SEALED TO EPS FOAM BEHIND
FINISH AS PER CODE OR AS SPECIFIED

WOOD, VINYL, STEEL, ETC.
BUCK MATERIAL FASTENED
TO CONCRETE W/EMBEDDED
SPIRAL NAILS, BOLTS, SCREWS
IN STAGGERED PATTERN, OR
AS PER MANUFACTURERS
SPECIFICATIONS.



STRONGHOLD
BUILD TRUST

These tables and drawings are provided as a reference guide for use by designers. The user is responsible for modifying the drawings and information as needed to meet applicable building code and construction practices. STRONGHOLD reserves the right to make changes to the drawings without notice and assumes no liability in connection with the use of this drawing including modifications, copying or distribution.

DRAWN:
CSK

DATE:
MARCH 2021

SCALE:
 $1\frac{1}{2}$ " = 1'-0"

TITLE:
STRONGHOLD 8" (203mm) FORM UNIT WINDOW
JAMB DETAIL FULL DEPTH WOOD ROUGH BUCK
EXTERIOR FINISH AS SPECIFIED